

** Bearing Insert Plate (M270, Gr. 50W) & Stud
shall be considered subsidiary to the
item "Prestressed Concrete Girders".

SIDE VIEW

TABLE OF DESIGN VARIABLES

ANCHOR BOLT DIAMETER	PIPE SLEEVE NOMINAL DIAMETER	SHEET METAL SLEEVE DIA.	STANDARD WASHER SIZE (O.D.)	MINIMUM EMBEDMENT LENGTH	SLOT WIDTH "r"	P Min.	R Min.	v	W
1½"	1½"	3"	3"	15"	2¾"	5"	2¾"	4½"	2¾"

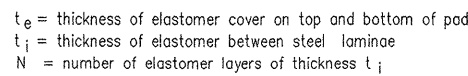


Diagram illustrating a sleeve repair on a riser. The assembly includes a Steel Washer, a Pipe Sleeve, and a Sheet Metal Sleeve. The Pipe Sleeve has a Thread section of $4\frac{1}{2}"$. The Sheet Metal Sleeve is shown extending 3" beyond the riser and is Swaged at the end.

ANCHOR BOLT DETAIL

NOTE:
Anchor Bolts may be cast in place or drilled and grouted into place.
If Anchor Bolts are to be cast in place, the Galvanized Sheet Metal Sleeves will not be required.
If Anchor Bolts are to be drilled and grouted in place, the Galvanized Sheet Metal Sleeves shall be cast in place as shown. Sleeves shall be dry packed with styrofoam, urethane foam or approved equal prior to pouring of concrete. After pouring of the cap and prior to erection of prestressed girders, the dry pack shall be removed and holes for the anchor bolts shall be accurately drilled into the masonry. Bolts placed in drilled holes shall be accurately set and fixed using a QPL approved epoxy or non-shrink grout that completely fills the holes. Galvanized Sheet Metal Sleeves will not be paid for directly, but will be considered subsidiary to the item "STRUCTURAL STEEL IN PLATE GIRDER SPANS (M 270 Gr. 50W)
ALTERNATE NO. 1

ALTERNATE NO. 1

WHITE RIVER BRIDGE APPROACHES DETAILS OF ELASTOMERIC BEARINGS WITH SHEAR BLOCKS

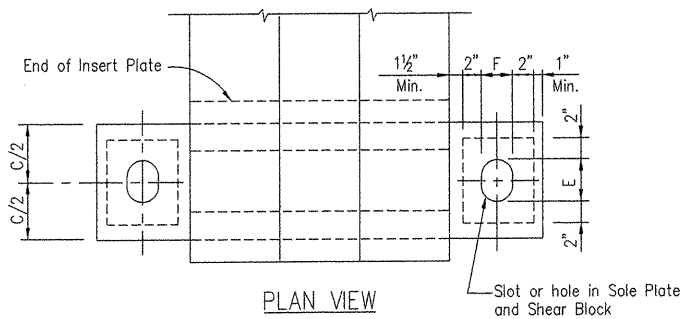
WHITE RIVER STR. & APPRS.
(CLARENDON) (PH I) (F)
MONROE COUNTY

ROUTE 79 SEC. 13

ARKANSAS STATE HIGHWAY COMMISSION
LITTLE ROCK, ARK.

Engstrom/Modjeski and Masters, Inc.

DRAWN BY: CJA DATE: Nov. 07 FILENAME: b1103941_e5
 CHECKED BY: YO DATE: Nov. 01 SCALE: 1 1/2"=1'-0"
 DESIGNED BY: FS DATE: Nov. 01
 BRIDGE NO. 06830 DRAWING NO. 42012



GENERAL NOTES

Elastomeric Bearings shall conform to Section 808 of the Standard Specifications and shall be paid for at the unit price bid for "Elastomeric Bearings."

External load plates & shear blocks shall conform to AASHTO M270, Grade 50W and will not be paid for separately, but will be included in the price bid for "Elastomeric Bearings". Pipe sleeves shall be ASTM A53, Grade B, and shall be galvanized to conform to AASHTO M232, Class C or AASHTO M298, Class 50.

External load plates with shear blocks shall be completely fabricated (including bevel, bolt holes and all shop welding) and shall be cleaned before vulcanizing to the elastomeric bearing. The surface in contact with the elastomeric bearing shall be cleaned in accordance with subsection 808.03. Other surfaces shall be blast cleaned in accordance with subsection 807.84(b) for painted steel and 807.84(e) for unpainted Grade 50W steel.

Anchor bolts, washers and nuts shall conform to subsection 807.07 of the Standard Specifications. The anchor bolt grade of steel shall be as specified in the "Table of Fabricator Variables". Indentations shall be circular with rounded bottoms and staggered as shown in the details.

Pipe sleeves, Anchor bolts, washers and nuts shall be paid for at the unit price bid for "Structural Steel in Plate Girder Spans (M270, Gr. 50W)".

Bearings shall be seated in accordance with subsection 808.08. This work and materials are considered as subsidiary to the item "Elastomeric Bearings" and will not be paid for directly.

1 Revised 'Table of Fabricator Variables' By HJE/MM
GPT - 10-15-10

2 Revised Dimensions 'J', 'Ta', & 'Tb' in the 'Table of
Fabricator Variables' By HJE/MM GPT - 9-12-11

BRIDGE ENGINEER

ACAD SCALE: 1 1/2"=1'-0"

COMPANY\1999.JOB\99-044 AHTD\WHITERIVER\JOB 110394\brapads1alt1